



iSMA-B-8I



SPECIFICATION	
Supply	DC: 24 V ± 20%, 0.4 W; AC: 24 V ± 20%, 0.6 VA
Digital inputs	8 - dry contact input, high-speed pulse counter up to 100 Hz
Interface	RS485 half duplex, Modbus or BACnet, up to 128 devices on the bus
Address	Set by switch in range from 0 to 99
Baudrate	Set by switch in range from 4800 to 115200 bps
Ingress Protection Rating	IP40 - for indoor installation
Temperature	Operating: -10°C to +50°C; Storage: -40°C to +85°C
Relative humidity	5 to 95% RH (without condensation)
Connectors	Separable, max 2.5 mm <sup>2</sup>
Dimension	37 x 110 x 62 mm
Mounting	DIN rail mounting (DIN EN 50022 norm)
Housing material	Plastic, self-extinguishing PC/ABS

**TOP PANEL**

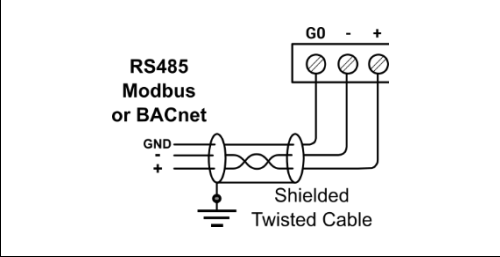
BAUDRATE 1, 2, 3	PROTOCOL 4, 5	BIT 6
000 USER	00 Modbus RTU	ON = Factory default
010 4800	01 Modbus ASCII	
011 9600	10 BACnet	
100 19200	11 BACnet SLAVE	
101 38400		
110 57600		
001 76800		
111 115200		

**DIGITAL INPUTS**

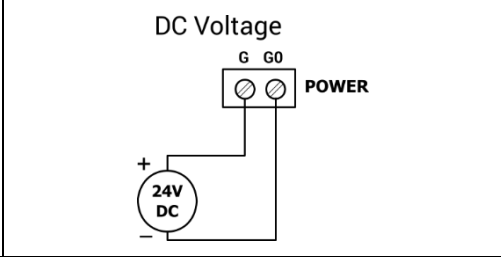
**Dry Contact**

Output current ~1 mA

**COMMUNICATION**



**POWER SUPPLY**



**WARNING**

- Note, an incorrect wiring of this product can damage it and lead to other hazards. Make sure the product has been correctly wired before turning the power ON.
- Before wiring, or removing/mounting the product, be sure to turn the power OFF. Failure to do so might cause electric shock.
- Do not touch electrically charged parts such as the power terminals. Doing so might cause electric shock.
- Do not disassemble the product. Doing so might cause electric shock or faulty operation.
- Use the product within the operating ranges recommended in the specification (temperature, humidity, voltage, shock, mounting direction, atmosphere etc.). Failure to do so might cause fire or faulty operation.
- Firmly tighten the wires to the terminal. Insufficient tightening of the wires to the terminal might cause fire.

**TERMINALS OF THE DEVICE**

